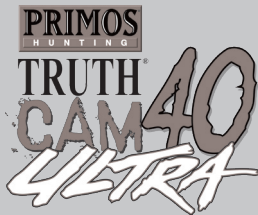




# TRUTH<sup>®</sup> CAM ULTRA S E R I E S

## INSTRUCTION MANUAL



## PHOTO MODES



Photo



Video



All Day Time Lapse



All Day Time Lapse  
+ Photos



**PLEASE READ CAREFULLY BEFORE USE**

Additional Information on this product and answers to frequently asked questions can be found at [www.primos.com](http://www.primos.com)

## **IMPORTANT**

For your protection, please carefully read these warnings, precautions and safety/operating instructions completely before operating this product. Follow these instructions closely and keep this manual for future reference.

## **WARNING**

To reduce the risk of fire, electrical shock or product damage/failure,

- Do not expose unit with the battery door open to rain, moisture, dripping or splashing. Do not open or close the battery door with wet hand. Completely wipe off water on unit and door before opening.
- Do not lay product on moist ground or submerge in water (this unit is designed for upright outdoor use).
- DO NOT OPEN CASE HOUSING. UNINSULATED, 'DANGEROUS VOLTAGE' WITHIN PRODUCTS ENCLOSURE. DO NOT REMOVE HOUSING COVER. THERE ARE NO USER - SERVICEABLE PARTS INSIDE, REFER SERVICING TO PRIMOS® CUSTOMER SERVICE.
- Only use batteries as specified in this user manual and install according to correct polarization. Failure to follow may result in leaking or exploding batteries, damage to product, fire or personal injury. Do not handle damaged or leaking batteries.
- Do not expose to extreme heat. Do not leave product and/or batteries exposed in direct sunlight inside a vehicle, or other contained environment for a long period of time.
- Only use accessories as recommended in this manual

## **CARE & CAUTION**

- Transport and handle with care. Do not strongly shake, bump, hit, drop or otherwise cause impact to the product – can result in product malfunction or damage to key components. Additionally, damage to the case could result in imperfections to water-resistant properties.
- Take extra care when handling or using product in places with sand and dust. Sand, dust and foreign substances exposed to product, especially in extreme proportions, may result in poor speaker quality, damage to the external jacks or internal components and could cause malfunction of the product. If exposed to any of these elements, please carefully wipe off completely before continued use.

## **MODIFICATION WARNING**

You are cautioned that any changes or modifications not expressly approved in this manual could void your warranty of this equipment.

## **OPERATING TEMPERATURE**

- Recommended storage temperature range -10°F to 140°F
- Recommended operating temperature range 20°F to 120°F

## **WARNING**

To avoid possible product damage and/or injury, NEVER INSTALL DIFFERENT TYPES OF BATTERIES in the product at the same time. Failure to follow may result in leaking or exploding batteries, damage to product, fire or personal injury. Do not handle damaged or leaking batteries.

## **QUESTIONS??**

Feel free to contact Primos® Customer Service Team with any comments, questions, problems or return requests. Call (601) 879-9323 or e-mail [service@primos.com](mailto:service@primos.com).

## INTRODUCTION



Thank you for choosing a Primos® TRUTH® Cam Ultra, we know you have choices and we appreciate you choosing us. Our goal at Primos® is to provide products for hunters that are reliable and “Simple to Use”. This past year we have been honored by getting so much feedback from you our customers. The TRUTH® Cams are some of the most highly rated products within the Game Camera category. We appreciate the positive feedback as well as input on how to make our products even better.

This year we have made some major improvements to our TRUTH® Cams. All TRUTH® Cam Ultras utilize sliding switches that make setting up simple as possible. We, like you, are always pushing to make our time afield more productive and fun. The TRUTH® Cam has all the features you want in a game camera that is “ Ultra Simple To Use”.

*Will Primos*      *Jimmy Primos*

# It's

# ULTRA

## SIMPLE TO USE THIS CAMERA



Install Batteries



Install SD Memory Card



Simply Set The Date & Time

MODE	SETTINGS			DELAY
	PHOTO BURST	VIDEO LENGTH	TIME LAPSE INTERVAL	
PHOTO HI	1	5s	10s	5s
PHOTO LO	2	10s	20s	10s
VIDEO HI	3	15s	30s	30s
VIDEO LO	4	20s	1M	1M
TIME LAPSE	5	30s	5M	5M
TL + PHOTO	-	60s	30M	30M

Slide Switches To Desired Setting  
The Camera Will Automatically Enter  
Active Standby Mode After 15  
Seconds!

# TABLE OF CONTENTS

<b>BEFORE OPERATION</b> .....	1
Needed To Operate .....	1
Select SD Card Size .....	2
<b>CAMERA OPERATION</b> .....	3
Date & Time .....	3
Switch Settings [MODE, SETTINGS & DELAY] .....	4
<b>CAMERA FEATURES &amp; OPTIONS</b> .....	7
Camera Is Ready To Use - Standby Mode .....	7
Auto Camera Sensitivity .....	7
Status Indication Lights .....	8
Number of Files Stored on SD Card .....	8
Battery Life .....	9
Formatting / Clearing SD Memory Card .....	9
Viewing/Retrieving Media .....	10
USB Port .....	11
External Power Port .....	11
Image Stamp .....	12
<b>CAMERA SPECIFICATIONS</b> .....	13
<b>OPERATING TIPS</b> .....	15
<b>RECOMMENDED ACCESSORIES</b> .....	18
<b>CUSTOMER SERVICE &amp; WARRANTY</b> .....	19

## BEFORE OPERATION

### INCLUDED PARTS

1. Truth® Cam ULTRA™ – (1)
2. 72” Tree Mounting Strap – (1)
3. Instruction Manual – (1)
4. Quick Reference Guide – (1)

### NEEDED TO OPERATE

1. Eight (8) “AA” Alkaline, Lithium or Rechargeable Batteries
2. One or more SD Memory Cards  
(Camera will support up to 32GB SD or SDHC Cards)  
NOTE: If no SD Card is installed 'Add SD' will display on the initial menu screen
3. SD Memory Card Reader or other device to download media from SD Memory Card to Computer. (Many computers have SD Memory Card slot built-in)

## SELECT SD CARD SIZE

These charts allow you to see the approximate capacity of 2GB, 4GB, 8GB, 16GB & 32GB SD Memory Cards. This will help you decide which size SD Cards might be appropriate based on your desired camera mode.

### Truth Cam Ultra 40

### SD Card Storage Capacity

Mode	Resolution	Avg. File Size	Media Type	2GB	4GB	8GB	16GB	32G
Photo Hi	3072x2304	1 MB	Images	2000	4000	8000	16000	32000
Photo Lo	2592x1944	800 KB	Images	2500	5000	10000	20000	40000
Video Hi	640x480	21 MB	Short Videos (15s)	95	190	380	760	1520
Video Lo	320x340	5.3 MB	Short Videos (15s)	380	720	1440	2880	5760
Time Lapse	1280x960	1.0 GB per Day	All Day Videos 10s Time Lapse	2 Days	4 Days	8 Days	16 Days	32 Days

\* Approximation - photo/video sizes are based on individual image details

# CAMERA OPERATION

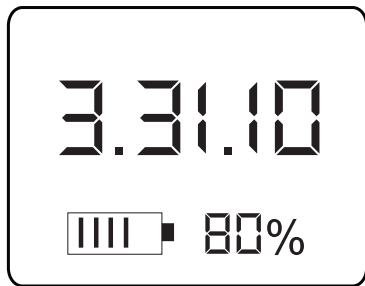
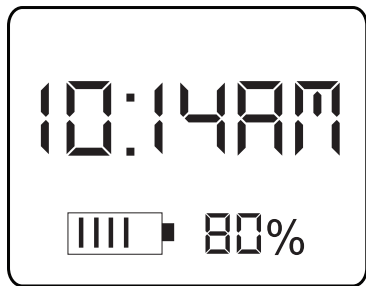
## SETTING DATE & TIME

### View Date or Time

With camera LCD screen ON, push ▲ or ▼ arrows to display date or time setting in the camera.

### To Change Date or Time

With Date or Time setting on the LCD screen, press **OK** button to enter edit mode (setting should start to blink). Use ▲ or ▼ arrows to change the setting, pressing **OK** button to save.



**NOTE:** This Truth® Cam Ultra™ is equipped with an internal rechargeable backup battery that is dedicated to saving the date and time settings when the main AA-cell batteries are removed. This internal backup battery can preserve your settings for up to 6 months when fully charged.

*(The Internal Backup Battery obtains its charge from the main 'AA' batteries. With first use or after a long period of time without camera use, internal battery may take up to 30 hours to fully charge - charges only when "AA" batteries are installed when camera is turned ON.)*



# SWITCH SETTINGS [MODE, SETTINGS & DELAY]

## 1. MODE SWITCH

Decide Which Capture Mode To Use

### Photo

Captures high (HI) or standard (LO) resolution photos with motion detection. Your camera's photo capture resolution can be found in the Camera Specifications chart in the back of this manual. Photo is the most popular capture mode. Media Saved: JPEG Photos

### Video

Captures high (HI) or standard (LO) resolution video clips with motion detection. Your camera's video capture resolution can be found in the Camera Specifications chart in the back of this manual. Video mode is less popular (night videos drain a lot of power resulting in shorter battery life). Media Saved: AVI Video Clips

### All Day Time Lapse

Captures time lapse photography automatically all day and saves footage in a video file. This mode has gained popularity for scouting further distances, such as big open areas (food plots, fields, etc) where you will capture footage automatically whether there is motion or not. However, with the camera constantly taking pictures all day, the battery life will be limited (see Battery Life in manual). Media Saved: All Day AVI Videos

### All Day Time Lapse Day + Photos

Same as Time Lapse above, but ALSO will simultaneously capture photos (with default photo setting - see below) during Day or Night when motion is detected. This mode allows the long range surveillance but also with the convenience of quickly seeing what walking directly in front of the camera [without having to watch the entire day time lapse video]. However, with the camera constantly taking pictures all day, the battery life will be limited.

Default Photo Setting: Photo Lo, 3 Burst, Delay according to Delay setting.

Media Saved: All Day AVI Video and JPEG Photos

1		2			3	
MODE		SETTINGS			DELAY	
		PHOTO BURST	VIDEO LENGTH	TIME LAPSE INTERVAL		
PHOTO HI		1	5s	10s		5s
PHOTO LO		2	10s	20s		10s
VIDEO HI		3	15s	30s		30s
VIDEO LO		4	20s	1M		1M
TIME LAPSE		5	30s	5M		5M
TL + PHOTO		-	60s	30M		30M

## SWITCH SETTINGS [MODE, SETTINGS & DELAY] CONT.

### 2. SETTING SWITCH

The sliding switches are color coded to match the SETTINGS with the corresponding MODE setting.

1		2			3	
MODE		SETTINGS			DELAY	
		PHOTO BURST	VIDEO LENGTH	TIME LAPSE INTERVAL		
PHOTO HI	→	1	5s	10s	5s	
PHOTO LO		2	10s	20s	10s	
VIDEO HI	→	3	15s	30s	30s	
VIDEO LO		4	20s	1M	1M	
TIME LAPSE		5	30s	5M	5M	
TL + PHOTO	→	-	60s	30M	30M	

#### Photo Burst

Number of pictures taken each time motion is detected (triggering event)

#### Video Length

The length (seconds) of each video clip recorded each time motion is detected (triggering event)

#### Time Lapse Interval

The pre-set amount of time (seconds or minutes) you desire between each time lapse photo. Short intervals offer more constant surveillance but your AVI video file will be larger. Longer intervals will reduce the video file size and save battery life.

## SWITCH SETTINGS [MODE, SETTINGS & DELAY] CONT.

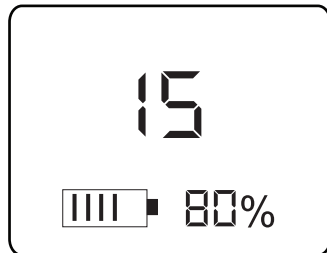
### 3. DELAY SWITCH

The pre-set amount of time you desire between photo & video recordings. The delay switch setting also applies to delay between photo recordings in Time Lapse + Photo mode.



### **CAMERA IS READY TO USE!**

AFTER SETTING DATE & TIME and SIMPLY SLIDING SWITCHES TO DESIRED SETTING, THE CAMERA WILL AUTOMATICALLY START A 15 SECOND COUNTDOWN. After the countdown, the camera is active standby mode and will record media according to the switch settings.



## CAMERA FEATURES & OPTIONS

### CAMERA IS READY TO USE - STANDBY MODE

When the camera is powered on, the LCD menu screen will automatically turn on. If menu is left inactive (no settings changed or button pushed) for 10 seconds, menu screen will start counting down from 15 seconds until it reaches Standby Mode.

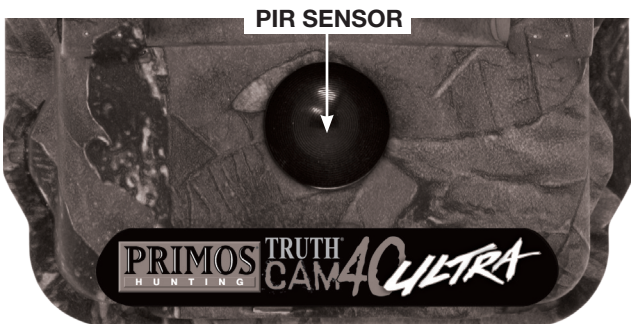
**After the 15 second countdown, the camera is active standby mode and ready to record media according to your switch settings.**

The camera and LCD menu screen can be awakened by pressing the **POWER** button.

**NOTE:** The POWER button only responds when the green LED light next to the Power button is not illuminated and 'PIC' is not displayed on the screen – both of these indicate the camera is busy saving media to the SD Memory card and the camera cannot be awakened from Standby Mode until this process is complete.

### AUTO CAMERA SENSITIVITY (PIR Sensing)

This camera is equipped with auto-adjusting Passive Infrared (PIR) Sensor. There is no need to worry about adjusting any settings for different climates or situations



## STATUS INDICATION LIGHTS

### RED LIGHT \*\*\*

#### **(on front of camera)**

Lights up when the camera detects motion. After you close camera door and are standing in front of the camera, visibility of this light is indication that your camera is ON and working.

*TIP: Walk in front of the camera and look for the red light to illuminate when you are detected. You can do this to verify your camera is pointing in the correct direction.*

**\*\*NEVER COVER THE RED LED LIGHT. This LED LIGHT also doubles as the camera's light sensor, which determines day or night operation.**

### GREEN LIGHT

#### **(next to PWR button inside camera)**

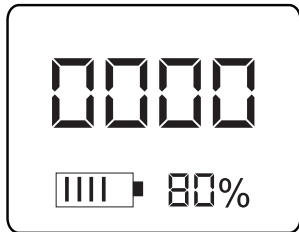
Lights up when the camera is capturing and recording media on the SD Memory Card. Also, the LCD screen will show 'PIC' during this process.

NOTE: Do not remove SD Memory Card when the green light is illuminated or blinking – this could cause you to lose all data on memory card!

NOTE: The LCD menu will not wake up from Power Saving Mode while the Green Status Light is illuminated/ LCD reads 'PIC'. Wait until after Green Light turns off and then press the POWER BUTTON to wake up the LCD screen.

## NUMBER OF FILES STORED ON SD CARD

The initial main LCD screen displays number of files '0000' stored on the SD Memory Card and the battery life. For example, '0015' would indicate that any combination of 'fifteen' photos, videos and/or time lapse videos are stored in the memory.



## BATTERY LIFE

Long battery life is one of the most important requirements for convenient and enjoyable game camera use. There are several variables that will determine the battery life including type of batteries, temperature outside, recording settings, frequency of camera activity, etc. Colder temperatures, more advanced settings, night photos and high photo frequency (low camera delay) will result in shorter battery life. Different brands of batteries may also perform better than others, so please experiment to find what works best for you. (NOTE: Capturing video clips and time lapse videos uses more power and will result in shorter battery life than capture motion detected photos.)

### EXAMPLES:

- Camera in standby mode with limited record activity may produce up to 1 year battery life.
- Camera with a lot of day activity in mild climate may produce tens of thousands of photos on one set of AA batteries.
- Time Lapse 10s Interval mode may only result in 5 to 7 day battery life using 8 AA batteries and 10 to 14 day battery life for Time Lapse 20s Interval mode.

## FORMATTING/CLEANING SD MEMORY CARD

If SD Memory Card has been used in any other devices, we recommend formatting before use in the Truth Cam. We also recommend reformatting the card every time the card is cleared of pictures. It only takes a few seconds and can avoid inconvenient corruption and compatibility issues that can result in loss of game pictures.

### Formatting The SD Card Erases All images and Data.

#### To Proceed With Formatting

1. Hold ▲ and ▼ arrow buttons together for 2 seconds
2. Format is complete when the display shows photo/video count "0000"



**CAUTION: NO WARNING IS DISPLAYED WHEN HOLDING DOWN BOTH ARROW BUTTONS IN FORMATTING SD CARD PROCESS. THIS DELETES ALL PHOTOS, VIDEOS, AND ANY OTHER DATA ON THE SD CARD.**

## VIEWING/RETRIEVING MEDIA

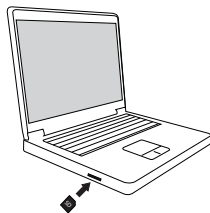
Explore the methods for viewing recorded media on your camera SD Memory Card:

1. Remove SD Memory Card from slot in camera
2. Replace with separate, clean SD Card if you want camera to continue work.

### How To View Images/Videos

#### 1. View images/videos with SD Card directly in computer.

If available you can view images/videos by inserting SD Card directly in SD memory card reader slot in computer



#### 2. View images/videos with SD Card by attaching external USB memory card reader to your computer.

If your computer doesn't have an SD Card reader built in, you can view images/videos by attaching USB memory card reader to your computer.



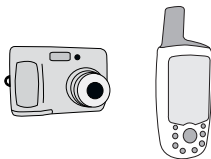
#### 3. View images/videos with SD Card using portable Game Camera Viewer

You can view images/videos using a portable device designed specifically for game cameras



#### 4. View images/videos with SD Card using other portable handheld devices such as digital cameras, GPS, etc.

**NOTE:** Many digital devices with viewing screens will display pictures taken by your Truth Camera. You can try these alternative viewing devices at your own risk – not all devices with SD Memory card slots will read the Truth Cam media correctly.



## USB PORTS

At this time, the USB port offers the following functions (USB cable not included):

1. PC CAMERA – Power on camera and then plug USB cable from camera into the computer
2. USB DRIVER – With camera power OFF plug USB cable from camera into the computer, then power the camera ON. In USB Driver mode you can review, copy and delete the media files/data stored on the SD Memory Card in the camera.

NOTE: Keep rubber weather resistant cover/plug in place when the port is not in use to avoid damage.

## EXTERNAL POWER PORTS

The Truth® Cam Ultra™ comes standard with an external power port. This is a DC JACK/2.0mm and will accept 6-12V power sources.

Recommended:

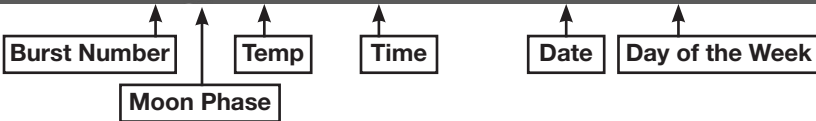
**Primos® 6V Steroid Trail and Game Camera Battery Pack**

NOTE: Keep rubber weather resistant cover/plug in place when the port is not in use to avoid damage





# IMAGE STAMP



# CAMERA SPECIFICATIONS

<b>Vendor Model #/Style #</b>	63074
<b>Camera Model</b>	Primos Truth Cam 40 Ultra -- 7MP Game Camera
<b>Shooting modes</b>	Photos, Videos, All-Day Time Lapse, Time Lapse with PIR Day & Night Photos
<b>Image sensor</b>	5.0 MP Color CMOS
<b>Photo resolution settings</b>	Large(3072x2304), Small(2592x1944)
<b>Photo burst settings</b>	1, 2, 3, 4, 5
<b>Video resolution settings</b>	640x480(30fps), 320x240(30fps)
<b>Video length settings</b>	5s, 10s, 15s, 20s, 30s, 60s
<b>Sound Recording</b>	n/a
<b>Time Lapse Video Resolution</b>	1280x960 (10fps)
<b>Time Lapse interval settings</b>	10s, 20s, 30s, 1m, 5m, 30m
<b>Lens</b>	7.5mm f/3.0
<b>Field of View</b>	55°
<b>Zoom</b>	fixed
<b>ISO sensitivity</b>	100
<b>Infrared Illumination</b>	40 High-Output IR Emitters;Up to 45ft
<b>PIR Sensor</b>	Multi Zone
<b>PIR Sensitivity</b>	Auto
<b>Trigger Time</b>	1 Second
<b>Removable Memory</b>	up to 32 GB SD Card
<b>System requirements (Windows)</b>	Windows 2000, XP, Vista or Win7; USB port
<b>System requirements (Mac)</b>	Mac OS X 10.3 or later; USB port

<b>Display</b>	1.1" Character LCD
<b>User Interface</b>	Sliding Switches
<b>Image Stamp</b>	Burst Count, Moon Phase, Temperature, 12 Hour US Time (AM/PM), Date, Day of the Week
<b>Memory</b>	SD Memory up to 32 GB card size (not included)
<b>Mounting</b>	Adjustable Webbing Strap with Buckle
<b>Power requirements</b>	8xAA Batteries (not included); 6-12V DC in
<b>Standby Current</b>	< 0.25 mA (<mAh/Day)
<b>Power Consumption (12v Power in)</b>	90mA (+960mA with IR)
<b>Power Consumption</b>	*SD Card Slot USB Jack 6V-12V DC Jack*
<b>Product height (in.)</b>	2.5
<b>Product width (in.)</b>	4.25
<b>Product length (in.)</b>	5.25
<b>Product weight (lb)</b>	Approx 1.5lbs
<b>Operation / Storage Temps</b>	*Storage: -10°F to 140°F Operation: 20°F to 120°F*
<b>Security Authentication</b>	FCC, CE

## OPERATION TIPS

### **Learning to use your TRUTH®Cam**

Visiting [www.primos.com](http://www.primos.com) and watching our Instructional Video Clips is the 'easiest way' to learn 'how to use' your TRUTH® Camera!

### **Troubleshooting or Questions**

Before calling customer service, visit [primos.zendesk.com](http://primos.zendesk.com) to find troubleshooting tips, frequently asked questions and answers, as well as any updates

### **Waking Up LCD Menu**

The LCD menu will not wake up while the Green Status Light is illuminated (LCD screen also reads 'PIC' at this time). Wait until after Green Light turns off / PIC disappears to WAKE up LCD screen by pressing the POWER button.

### **Camera Mounting Direction**

The red status light illuminates when camera detects motion. To verify your camera is pointing in the correct direction, you can walk in front of the camera after it is setup and look for the red light to illuminate when you are detected – the camera will take pictures/videos when motion is detected according to your settings. The Truth® Cam 20/20 Mount makes mounting easier and allows photo capture from the angle of your choice (versus relying on the tree).

### **Camera Mounting Height**

Generally 3ft from ground is normally good height to mount the camera, but depends on type of game and ground terrain. The Truth® Cam 20/20 Mount makes mounting easier and allows photo capture from the angle of your choice (versus relying on the tree).

## **Blurry Images**

Primos® takes pride in the quality of images captured by the Truth® Cam. However, this is an outdoor product that will be constantly exposed to different/changing conditions that can affect the quality level. Blurry images typically result from objects causing interference between the camera and the intended focal point (game too close, brush, trees, etc). Blurry images may also be the result of direct sunlight, fog, condensation (dew), water droplets, snow/ice, dirt, dust or other debris on the camera lens. Carefully cleaning the camera lens window, making sure there are no scratches and/ or placing the camera in a different location may solve this type of problem.

## **Blurry Image Quality – Motion**

Primos® takes pride in the quality of images captured by the Truth®Cam. Primos has improved the ANTI-BLUR for this product; however there is currently no way to eliminate the potential of photos with blur caused by game moving (motion) too quickly. We have optimized the Truth®Cam to limit the number of motion blurred images and provide as many clear, quality photos as possible.

## **Dark or Light Image Quality**

Primos® takes pride in the quality of images captured by the Truth®Cam. As daylight transitions back-and-forth between light and dark, the camera changes settings to optimize the picture. Some 'lighter' or 'darker' photos may be captured during the camera transition process – this should be a limited amount of photos with the optimization of our software. Also, please try to avoid setting up the camera in situations where the sunlight will shine directly into camera lens. With any photo capturing, taking pictures directly into sunlight produces less than desirable results.

## **Empty Photos/False Triggers**

If there are a large number of photos taken with no game present in the frame, first make sure your camera is mounted the correct height and in the right direction. If there are limited, random photos with no game present, the following scenarios are most likely 1) an animal ran through the picture extremely fast or 2) a smaller animal/bird is around the camera/sensor but is not in the camera field of view or 3) the sunlight or heat in combination with moving elements (trees, brush, shadows) is causing a false trigger. The first two scenarios are hard to prevent, but the sunlight/heat should not cause many false triggers as the camera has been optimized to sense and distinguish for correct triggering. To prevent potential false triggers, try not to setup the camera directly in the sunlight.

### **Camera Doesn't Save Photos/Video**

The SD Memory Card may be locked. Please look closely at the card and make sure the card is in the 'unlocked' position. If photos/ videos are still not saved by camera activity, the SD Memory Card may be corrupt or damaged. You can try to reformat the card on a computer and try it again, or simply try replacing it with a different/new SD Memory Card.

### **Storing Camera**

Do not store in extreme heat, cold, moist or humid conditions. Remove batteries when storing for periods for longer than one week without use.

### **Inside Camera Operation**

The camera is designed for outdoor use. It is ok to test the camera indoors for operation, but please note the indoor lighting and reflection may not be optimal for correct photo exposure and video recording.

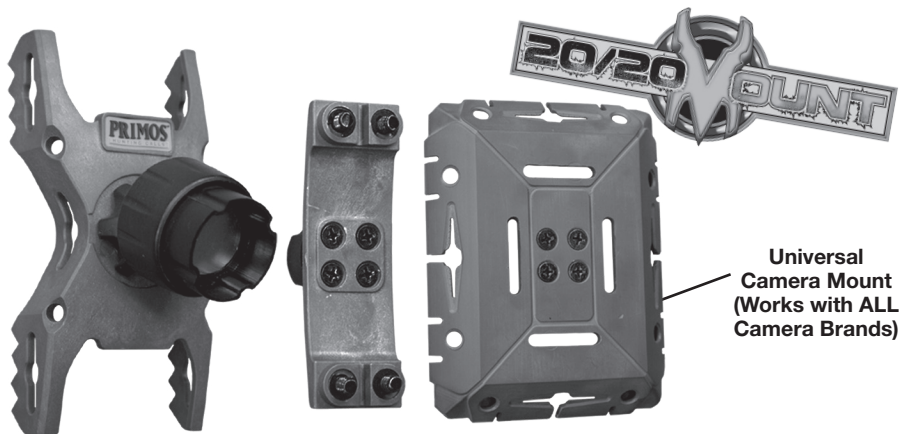
### **Watching All Day Time Lapse Videos**

Time Lapse recordings are meant to be saved as an all day video file - one video file per day. However, with interruptions, sometimes a few video files can be saved per day. Regardless, the video is saved in a standard AVI video format which can be played in almost all video players. The most common video player is Windows Media Player. If using Windows Media Player, you may enjoy the ability to 'speed up' or 'slow down' the video playback. To do this, with the video file open in playback mode:

Right Click on Video --> Select Enhancements --> Select Play Speed Settings.

If you want more advanced playback features, feel free to visit [www.primos.com](http://www.primos.com) for other video player recommendations.

## RECOMMENDED ACCESSORIES



**Universal  
Camera Mount  
(Works with ALL  
Camera Brands)**

- **Makes Every Camera have Better Vision**
- **Easily rotate your camera to get the PERFECT SHOT**
  - **Fits ALL camera brands**
- **Install camera high in tree for better view and security**
- **Magnetic connection socket allows camera to quickly attach/detach from tree**
- **Includes T-Post adaptor for surveillance without trees**

### **Other Accessories**

1. Padlock for door latch to prevent tampering camera settings or memory
2. Locking Security Cable to run through case and around tree. Accepts 5/16" Master Lock® Python™ Adjustable Locking Cable is convenient and highly recommended.
3. 6V-12V DC External Battery for those needing extended battery life for remote or extremely active locations (plug into bottom of camera)

# CUSTOMER SERVICE & WARRANTY

## WARRANTY

**You MUST register your Truth® Cam online within (30) days of receipt to receive the 1 Year warranty AND present a “Proof of Purchase” to receive warranty protection. If neither of these are presentable, we will not replace your item.**

### **Up to 1 YEAR LIMITED WARRANTY**

Primos® Hunting (“Primos”) warrants the TRUTH®Cam to be free from defects in workmanship and materials, under normal use and conditions, for the time periods and terms as set forth below. According to this Limited Warranty Primos® will, at its discretion, (a) repair the production using new or refurbished parts or (b) replace the product with a new or refurbished product (product that has been returned to its original specifications). In the event of a defect, these are the exclusive remedies available to the original consumer purchaser only and is not assignable or transferable.

Terms: You must register your TRUTH® Cam and keep the “Proof of Purchase” receive warranty protection.

\*\*Go online to [www.primos.com/registration](http://www.primos.com/registration) and complete the Online Registration. You have 1 month from date of purchase to register your TRUTH® Cam online.

\*\* visit [primos.zendesk.com](http://primos.zendesk.com) for FAQ, PDF manuals, camera support or to open a troubleshooting ticket.

Limitations: This warranty is valid only if the product is used for the purpose for which it was designed. It does not cover: 1) products which have been damaged by negligence/misuse (including, but not limited to, improper storage, battery leakage and water damage caused by submersion), accident or which have been modified or repaired by unauthorized persons; 2) cracked or broken housing of units damaged by excess heat or impact/force; 3) damage caused by wild animals 4) the cost of shipping this product to the factory for service and its return to you.

### **Instructions:**

In the event warranty service is needed, please contact Primos® Customer Service ([service@primos.com](mailto:service@primos.com)) to obtain a Return Merchandise Authorization (RMA) number. Once you have secured a RMA number, you will be required to:

1. Write RMA number in large/visible print on outside of package.
2. Remove SD memory card and batteries from product and pack in well-padded or highly protective box. Primos® Hunting will NOT be responsible for damage incurred in returning product for repair.
3. Include Return Form and “Proof of Purchase” in with return.
4. Send product prepaid to:

Primos Hunting  
604 First St  
Flora, MS 39071



## FCC STATEMENT

This equipment has been tested and found to comply with the limits for a Class B digital device, pursuant to part 15 of the FCC Rules. These limits are designed to provide reasonable protection against harmful interference in a residential installation. This equipment generates, uses and can radiate radio frequency energy and, if not installed and used in accordance with the instructions, may cause harmful interference to radio communications. However, there is no guarantee that interference will not occur in a particular installation. If this equipment does cause harmful interference to radio or television reception, which can be determined by turning the equipment off and on, the user is encouraged to try to correct the interference by one or more of the following measures:

Reorient or relocate the receiving antenna.

Increase the separation between the equipment and receiver.

Connect the equipment into an outlet on a circuit different from that to which the receiver is connected.

Consult the dealer or an experienced radio/TV technician for help



## DISCLAIMERS

Primos® makes no representations or warranties, either expressed or implied, by or concerning any content of these written materials or software, or for damages resulting from the use of the information contained therein. Primos® reserves the right to alter the features and contents of this publication, hardware or software without obligation or advance notice.

Warranty does not extend to any accessories used with the camera.

Primos® is not responsible if you use the TRUTH® Cam for illegal purposes.

Primos® shall not be obligated to perform preventative maintenance, installation, deinstallation, or maintenance.

The illustrations in this manual are for instructional purposes only and may not represent actual product exactly.

## Online Support

Visit [www.primos.com](http://www.primos.com)  
for instructional videos

For FAQ, PDF Manuals,  
Camera Support or to  
open a troubleshooting  
ticket visit our  
customer service site  
at [primos.zendesk.com](http://primos.zendesk.com)



# TRUTH CAM ULTRA

S E R I E S

