

Firmware update 5.44.00 for Bushnell Equinox Z2 Night Vision

This firmware update adds two new features to the Equinox Z2 night vision models (*the earlier Equinox "Z" line is not compatible with this firmware*):

- Image and video recording while powering the Equinox Z2 with an external power source (1A (1000mA) or higher output required) thru the micro-USB port.
- Continuous recording capability until the battery (external or internal AA's) is exhausted or the micro-SD card becomes full.

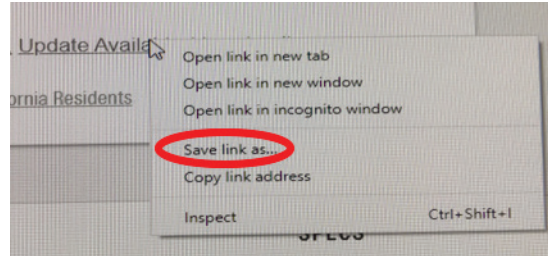
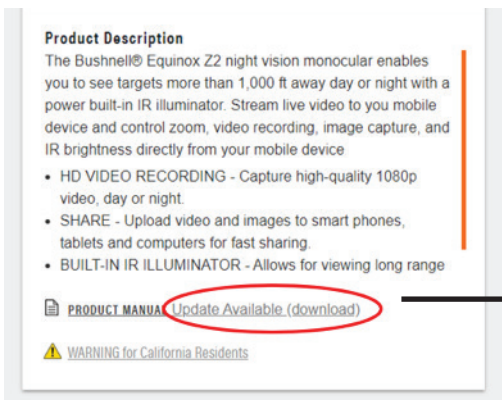
Step 1: Each of the three Equinox Z2 models has a different firmware update file. Confirm your unit's model number to ensure you select the appropriate update. The product model can be found on the back of the unit.



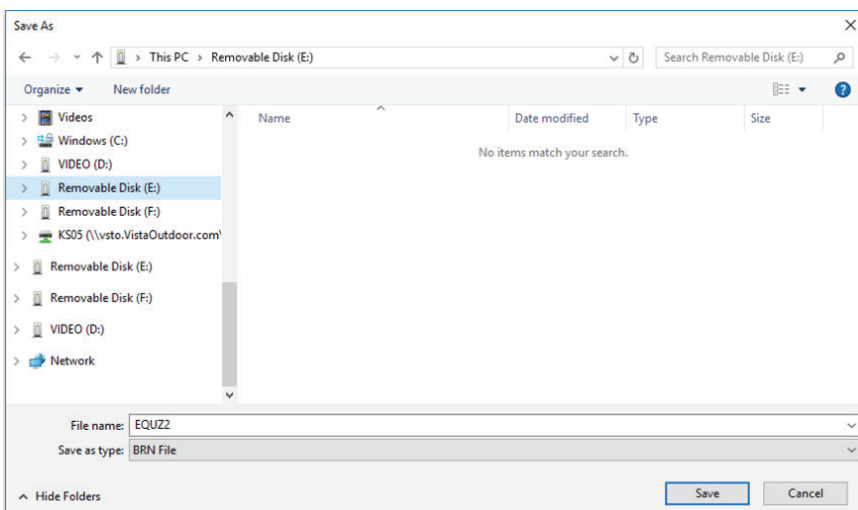
Equinox Z2 6x50 model shown here

Step 2: Insert a new micro-SD card into your computer (use a micro-SD card adaptor if necessary), or format a previously used micro-SD card to erase its contents using your computer (select FAT32 formatting) or the Equinox Z2 (select "Format SD Card" in the Advanced Settings menu).

Step 3: Go to www.bushnell.com and select the product page for **your Equinox Z2 model** (see Step 1) from the "Night Vision" product category. Right click the "Update Available (download)" link and select "Save link as..." (PC) or "Download Linked File As" (Mac).



Step 4: Select the micro-SD card you inserted previously from the list on the left of the pop-up and save the file to the card. **DO NOT change the file name or type. The device needs to see the name EQUZ2 for the update to be successful.**



Step 5: Safely remove the micro-SD card from your computer. Make sure your Equinox Z2 is powered off and insert the micro-SD card into its card slot.



Step 6: Power on the Equinox Z2.

Step 7: Push the center button (Select) on the Equinox Z2 control pad to enter the Settings menu (*if the display was not already visible, you will need to press the button twice*).

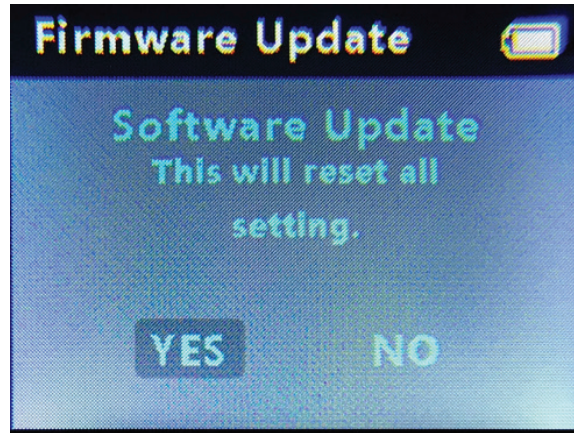
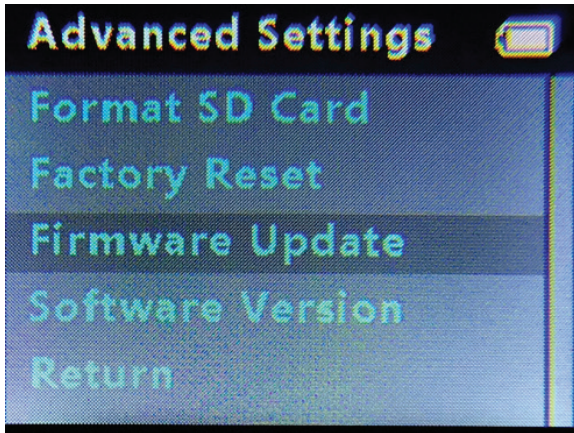


Step 8: In the Settings menu, press the down button (control pad button closest to the eyepiece) to navigate to the bottom of the Settings menu (the menu is continued to a second page after "Wi-Fi Setup"-keep pressing the down button). With "Advanced Settings" highlighted as shown below, press the center button to select it.

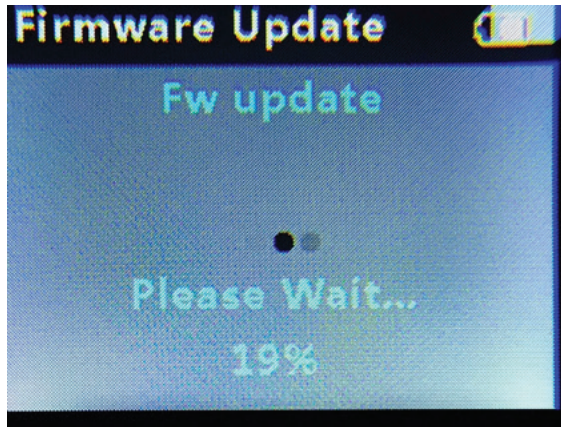
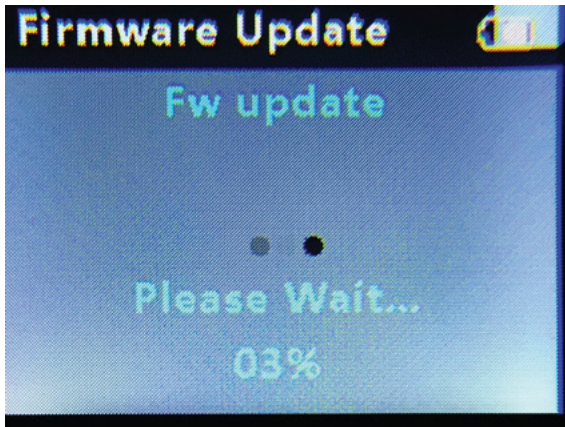


Step 9: In the Advanced Settings menu select “Firmware Update” and then select “YES.”

Note: selecting YES will reset all settings.



Step 10: Once the “Fw update” screen reaches 100% the Equinox Z2 will automatically shut off and complete the update process. Wait a few minutes, then confirm the firmware update was successful by checking the software version number, following the steps on the next page.



FIRMWARE UPDATE CONFIRMATION

Step 1: To confirm the update was successful, power on the Equinox Z2.

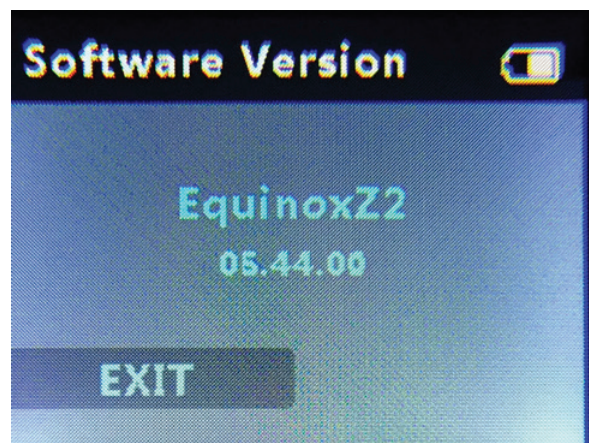
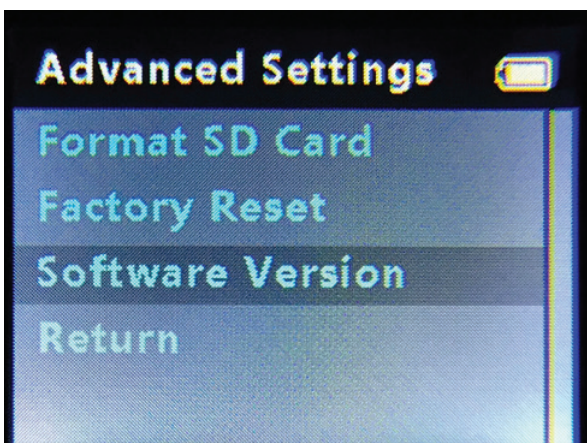
Step 2: Push the center button on the Equinox Z2 control pad to enter the Settings menu.



Step 3: In the Settings mode press the down button (the button closest to the eyepiece) to navigate to "Advanced Settings" near the end of the listed settings, on the second page of the menu (keep pressing down after "Wi-Fi Setup").



Step 4: In the Advanced Settings menu select "Software Version" and confirm the current software version 5.44.00 is shown below "Equinox Z2". Press the center (Select) button to exit the Settings menu.



The update is now confirmed complete.