

Bushnell®

Laser Sights

All Red & Green Laser Models

HASTE™

CHASE™

RUSH™

OWNER'S MANUAL

MODEL #: AR1001BR / AR1001BG / AR1001TR / AR1001TG / AR1001GR / AR1001GG

AR1002BR / AR1002BG / AR1003BR / AR1003BG

06-17

This product is designated as Class IIIa during operation.

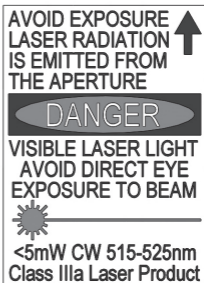
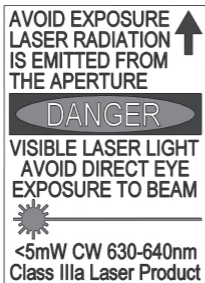
- Wavelength: Red: 635nm (+/-5nm), Green: 520nm (+/-5nm)
- Laser Power for classification: <5mW
- Beam Divergence: <1.0mRad

LASER LIGHT - AVOID DIRECT EYE EXPOSURE

CAUTION - use of controls, adjustments or performance of procedures other than those specified in this manual may result in hazardous radiation exposure.

DO NOT POINT LASER OR ALLOW LASER LIGHT TO BE DIRECTED OR REFLECTED TOWARD OTHER PEOPLE OR REFLECTIVE OBJECTS. USE CAUTION AROUND FACE AND EYES.

Night hunting with artificial light sources may be prohibited or restricted in your location. Please check state/local game laws for clarification.



SAFETY INSTRUCTIONS/WARNINGS



WARNING!: FAILURE TO FOLLOW ANY OF THESE WARNINGS MAY RESULT IN SEVERE INJURY OR DEATH TO YOURSELF OR OTHERS.

Prior to installing this device, ensure that the firearm is unloaded, the magazine is removed, the safety is on, and nothing is in contact with the trigger.

DO NOT install or use this device if installation of the device could affect the safe function of the firearm in any way. During installation, if you experience any problems with the functionality of the firearm, or feel unsure about the fit or other installation aspects, STOP IMMEDIATELY and call Bushnell Customer Service for assistance at 1-800-423-3537.

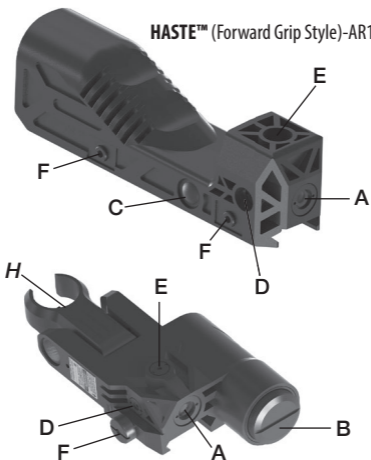
OBSERVE THE RULES OF FIREARM SAFETY AT ALL TIMES

- Assume your firearm is loaded when handling it.
- Do not place a finger on the trigger until you are sighting on your target and ready to fire.
- Be certain and aware of both your target and everything beyond it.

PLEASE READ THE ENTIRE MANUAL. Failure to follow the instructions in this manual may result in injury or death.

- **DO NOT POINT THE LASER BEAM AT ANYONE'S EYES. PERMANENT EYE DAMAGE CAN RESULT.**
- Always be sure to follow firearm safety rules as listed by the manufacturer of the firearm.
- Keep this and all firearm related products locked up securely away from children or other unauthorized persons.

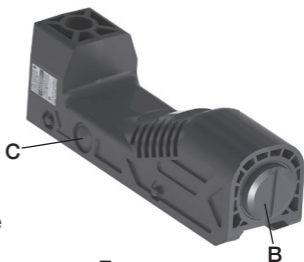
HASTE™ (Forward Grip Style)-AR1001xx



CHASE™ (w/Back Up Sight)-AR1002xx



RUSH™ (w/TRS Mount)-AR1003xx



PARTS GUIDE

A - Laser Aperture

B - Battery Cover

C - Power Switch

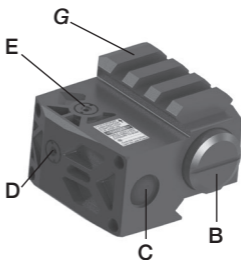
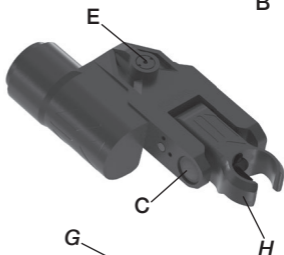
D - Windage Adj.

E - Elevation Adj.

F - Mounting Bolt

G - TRS Mount
Rail (*RUSH only*)

H - Backup Iron
Sight (*CHASE
only*)



Thank you for purchasing your new Bushnell® Laser Sight. This manual provides directions for setting up and using 3 different Laser Sight models, as shown on the preceding Parts Guide pages:

- **HASTE™:** a traditionally designed Forward Grip style laser sight
- **CHASE™:** a compact laser sight with a retractable back up "iron sight"
- **RUSH™:** a compact model with a top mount rail for the Bushnell TRS-25 or similar red dot sight

Each of these core models are available with a red or green laser, and the **HASTE** model offers a choice of black, gray or tan (FDE) finish.



WARNING! : ENSURE THE WEAPON IS UNLOADED AND THE SAFETY SELECTOR IS IN THE "SAFE" POSITION BEFORE ATTEMPTING TO INSTALL, REMOVE OR PERFORM MAINTENANCE ON THE SIGHT.



WARNING! : USE CAUTION WHILE ACTIVATING THE LASER, AVOIDING DIRECT EYE EXPOSURE, WHICH CAN RESULT IN PERMANENT EYE DAMAGE.

BATTERY ACTIVATION AND REPLACEMENT

All of the laser sight models covered by this manual use the same battery, a CR2 lithium 3 volt. The battery is pre-installed in the sight. **Remove the plastic protective strip to activate the battery before using the laser sight for the first time.** When the laser no longer functions or becomes dim, the battery should be replaced. **Use only CR2 batteries. DO NOT USE rechargeable batteries,** as damage may occur.

1. Remove battery cap (**B**) by turning it counter clockwise. A coin may be used in the cap's slot if necessary.
2. Insert a battery (type CR2) with positive (+) end toward cap.
3. Replace battery cap by turning clockwise until snug. Hand tighten only, using a coin or similar item. The spring at the bottom of the battery compartment provides pressure against the battery to ensure good electrical contact, so be sure to keep the cap straight and level when replacing it to avoid damaging the cap's screw threads.



4. Verify that laser illuminates by pressing the power switch (C).

MOUNTING

Your laser sight is designed for installation on most types of weapons, which have a MIL-Std 1913 Picatinny Rail. If your weapon does not have or support an appropriate base(s), please consult your dealer, gunsmith or other qualified source. To install the sight on a Picatinny Rail:

1. Loosen the mounting bolt (F) by means of the provided allen wrench, so that the locking bar can clamp around the Picatinny rail. The mounting bolt on the CHASE model may be turned by hand.
2. Install the sight to the weapon rail by tightening the bolt. First, ensure that the sight is correctly positioned and that the bolt's shaft fits into a groove on the Picatinny/Weaver rail. To make sure that the bolt is firmly tightened, screw the shaft clockwise until a light resistance can be encountered. After that, screw another 1/4 to 1/2 turn. **CAUTION! Do not overtighten.**
3. Finally, make sure that the shaft and side bar is firmly tightened around the weapon rail.

ALIGNMENT

Once the laser sight is mounted on your firearm, the final step is to adjust the sight's windage and elevation screws if necessary to ensure the laser will coincide with the firearm's point of aim. Follow the procedure below to "zero in" the laser:

1. The conventional riflescope or red dot sight you already use with the firearm will be used for reference, so make sure it has been sighted in properly, so that the center of the reticle (or central dot) indicates the firearm's point of aim accurately. Refer to the instructions supplied with the scope or sight, and consult your local gunsmith if you need assistance with this procedure.
2. At the range, with the laser sight mounted on the firearm in addition to your regular riflescope or electronic sight, turn on the laser by pressing the power switch (C).



DO NOT POINT THE LASER BEAM AT ANYONE'S EYES. PERMANENT EYE DAMAGE CAN RESULT.

3. Aiming at a range target at least 25 yards away, and viewing through your scope or red dot sight as you normally would, observe where the laser falls on the target relative to the center of the scope's reticle or the sight's dot. If the laser is higher or lower,

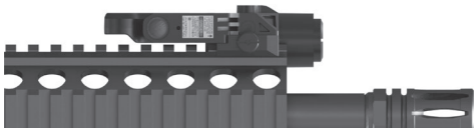
adjust the laser's elevation screw using the provided tool.

4. If further fine tuning is necessary, load the gun and fire an adequate number of rounds to determine a consistent group on the target. Re-adjust the laser sight's windage and elevation screws as needed, moving in the direction of the group. For example, if the laser is pointed at the center of the target, but the bullets hit high and right, move the laser beam up and to the right.

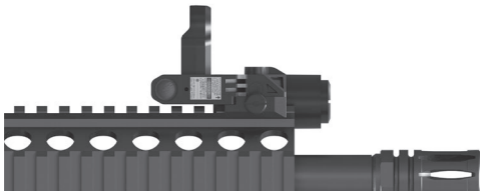
BACK-UP SIGHT (*CHASE models only*)

To use the back up "iron" sight on the **CHASE** laser sight models (*AR1002BR/AR1002BG*), simply pull the sight up until the spring clicks it into place. To retract the sight, push it back down to the folded position.

CHASE (folded position)



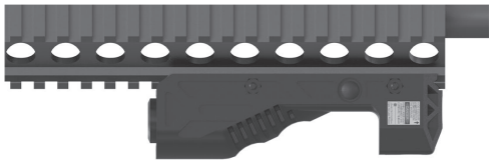
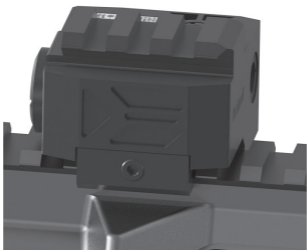
CHASE (back up sight in use)



TOP MOUNT RAIL (*RUSH models only*)

A short Picatinny rail is provided on the top of the **RUSH** laser sight models (**AR1003BR/AR1003BG**) to allow mounting the popular Bushnell TRS-25 red dot sight or similar sized electronic sights. Follow the mounting instructions that came with your sight or accessory to attach it securely.

RUSH (w/Picatinny top rail)



HASTE (mounted)

ONE-YEAR LIMITED WARRANTY

Your Bushnell® electronic product is warranted to be free of defects in materials and workmanship for one year after the date of purchase. In the event of a defect under this warranty, we will, at our option, repair or replace the product, provided that you return the product postage prepaid. This warranty does not cover damages caused by misuse, improper handling, installation, or maintenance provided by someone other than a Bushnell Authorized Service Department.

Any return made under this warranty must be accompanied by the items listed below:

1. A check/money order in the amount of \$10.00 to cover the cost of postage and handling.
2. Name, address and daytime phone # for product return.
3. An explanation of the defect.
4. Copy of your dated proof of purchase.

Do not send in accessories (batteries, SD cards, cables), only the product for repair. Product should be well packed in a sturdy outside shipping carton to prevent damage in transit, and shipped to the address listed below:

IN U.S.A. Send To:

Bushnell Outdoor Products
Attn.: Repairs
9200 Cody
Overland Park, Kansas 66214

IN CANADA Send To:

Bushnell Outdoor Products
Attn.: Repairs
140 Great Gulf Drive, Unit # B
Vaughan, Ontario L4K 5W5

For products purchased outside the United States or Canada please contact your local dealer for applicable warranty information.

In Europe you may also contact Bushnell at:

Bushnell Germany GmbH
European Service Centre
Mathias-Brüggen-Str. 80
D-50827 Köln
GERMANY
Tel: +49 221 995568-0
Fax: +49 221 995568-20

This warranty gives you specific legal rights.
You may have other rights which vary from country to country.

©2017 Bushnell Outdoor Products

FCC Note:

This device complies with Part 15 of the FCC Rules. Operation is subject to the following two conditions: (1) This device may not cause harmful interference, and (2) this device must accept any interference received, including interference that may cause undesired operation.

This equipment has been tested and found to comply with the limits for a Class B digital device, pursuant to Part 15 of the FCC Rules. These limits are designed to provide reasonable protection against harmful interference in a residential installation. This equipment generates, uses and can radiate radio frequency energy and, if not installed and used in accordance with the instructions, may cause harmful interference to radio communications. However, there is no guarantee that interference will not occur in a particular installation. If this equipment does cause harmful interference to radio or television reception, which can be determined by turning the equipment off and on, the user is encouraged to try to correct the interference by one of the following measures:

- Reorient or relocate the receiving antenna.
- Increase the separation between the equipment and receiver.
- Connect the equipment into an outlet on a circuit different from that to which the receiver is connected.
- Consult the dealer or an experienced radio/TV technician for help.

Shielded interface cable must be used with the equipment in order to comply with the limits for a digital device pursuant to Subpart B of Part 15 of FCC Rules.

FCC Caution: Any changes or modifications not expressly approved by the party responsible for compliance could void the user's authority to operate this equipment.



Specifications and designs are subject to change without any notice or obligation on the part of the manufacturer.

Bushnell[®]

©2017 BUSHNELL OUTDOOR PRODUCTS
WWW.BUSHNELL.COM