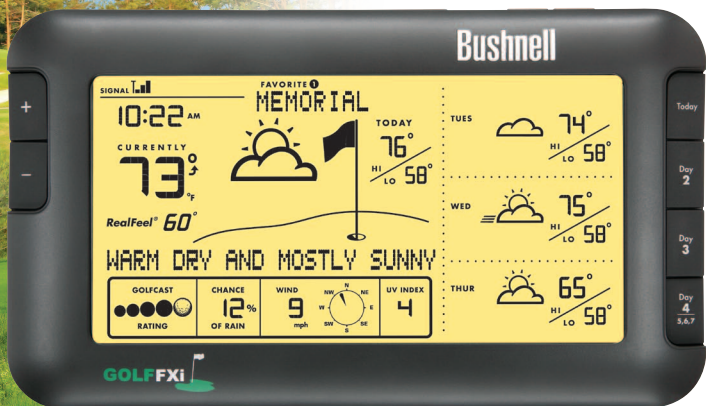


7 DAY WIRELESS FORECASTER **WEATHERFXi** FOR GOLF



User Manual

Bushnell®

MODEL# 960071C
Lit #: 98-1447/05-09

Thank you for purchasing the Bushnell® Golf FXi, an Internet based 7-day weather forecaster. Designed and engineered with state-of-the-art wireless technology, this instrument will provide accurate and reliable weather forecast information for today and the next six days for any of over **16,000 U.S. golf courses**. No external sensors or subscriptions are required, and the Wireless Display may be placed anywhere in your home. Weather data is automatically updated from the Internet throughout the day via AccuWeather.com® and sent to the Golf FXi unit using a wireless USB Transmitter connected to the user's PC. Setup is easy – simply install and run the software, select your home course and up to 4 more, plug in the Transmitter and power up the Receiver. Read this manual carefully to fully explore the features and functions of your new Golf FXi forecaster.

THE BUSHNELL GOLF FXi FEATURES:

Automatically Updated 7-DAY Forecasts

- Current Temperature with *RealFeel*®
- High & Low Temperature
- GolfCast Rating
- Chance of Rain
- Maximum UV Index
- Average Wind Speed & Direction
- Lightning Alert
- Auto-Synchronized (Internet) Clock
- Alarm and Snooze
- Color Backlight – Color Indicates Current Temperature Range
- Weather Forecast Message
- Forecast Data Available for Over 16,000 U.S. Golf Courses
- Store up to 5 Favorite Golf Courses for Easy Viewing

INSTALLATION AND SET-UP INSTRUCTIONS

STEP 1: INSTALL THE SOFTWARE

Before connecting or operating the Transmitter or Receiver hardware, you should install the Golf FXi software program on your PC. The software automatically connects to a special weather data server on the Internet, displays the data on your PC screen (when the Golf FXi program window is open), and transmits the data via the connected USB Transmitter to the wireless Receiver unit. Before installation, ensure that:

- Your PC is connected to the Internet. A high-speed internet connection (not via dialup or phone modem) is recommended.
- You are using Windows 2000, XP (32 bits) or Vista (32 bits). Windows 98 and Macs are not supported.


Insert the supplied CD into your CD ROM drive and click the “Golf FXi Setup Wizard” button when it appears to start the installation (Fig. 1). Follow the on-screen instructions, clicking “Next” until the installation is complete (Fig. 2). A “Golf FXi” shortcut icon () is added to your desktop screen during the installation.



Fig. 1

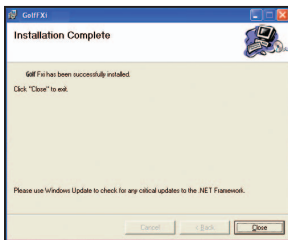


Fig. 2

STEP 2: CONNECT THE USB TRANSMITTER

Connect the USB Transmitter to your PC via one of its main USB ports. As the Transmitter is powered by the USB port (it does not require batteries), avoid connecting it to unpowered USB “hubs” – USB ports located on a PC keyboard or others that may not deliver adequate power. When using the Transmitter with a laptop, power the computer with its AC power supply to reduce battery drain and ensure reliable USB power. Raise the Transmitter’s antenna to the upright position to ensure maximum range (up to 300 ft.) and signal strength to the Receiver.

STEP 3: START THE GOLF FXi APPLICATION AND SET LOCATIONS

Double click the Bushnell “Golf FXi” icon on your desktop to start the program. After it opens (this may take a minute or so the first time the program is launched), there are two simple, one time set-up steps required. The first is to set your primary, or “home” course location, as well as up to four additional “Favorite” courses (allowing you to quickly check the weather forecast for a course at your vacation destination, nearby city, etc). Move your cursor into the first (far left) location box, then click on the “Edit Location” button that pops up below it (Fig. 3). Use

the drop down arrows to select the State, City and Golf Course name from the lists that appear (Fig. 4). Once you have made the three settings to define your location, click “Save” (if you get a “Cannot connect to server...” message, wait a minute and try clicking “Save” again). Follow the same process to set-up additional locations.

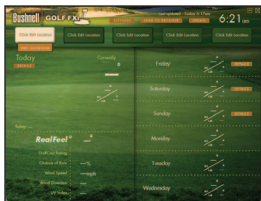


Fig. 3

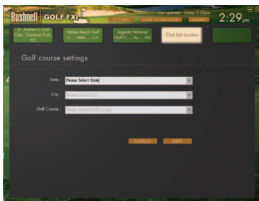


Fig. 4

Next click “Settings” at the top of the screen (just right of the Golf FXi logo) (Fig. 5). Use the “Time Zone” drop down to set your home time zone, also click the “Daylight Savings On” button if it currently applies in your area. Then select your preferences for how other types of data will be displayed using the remaining drop downs for temperature units, etc. When finished, click “Save” to store these settings and return to the main screen (Fig. 6). The Golf FXi application is now set up and ready to use.

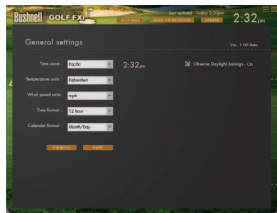


Fig. 5

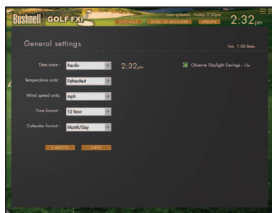



Fig. 6

STEP 4: SETTING UP THE RECEIVER UNIT

The Receiver may be powered by 4AA batteries or from the included AC adapter. **Note:** *as soon as batteries are installed or the AC adapter is connected, the unit will power on, and run through a display test routine, cycling through the various backlight colors, then displaying letters and numbers in various sections of the display. This is normal and takes less than a minute.* When completed, the display will show a “Searching for PC” message (press SEARCH on the back of the Receiver if it does not). Keep the Receiver near the PC until the setup is complete then you may move it anywhere in your home, up to 300 ft (91.4m) from the Transmitter.

STEP 5: TRANSMIT DATA FROM PC TO THE RECEIVER

This is a simple process, in fact it's normally completely automatically after the initial setup. First, make sure the Receiver displays the "Searching for PC" message. If it doesn't, press the SEARCH button on the back of the Receiver you should then see the "Searching..." message, and the Signal strength icon () on the top left corner of the display should be blinking. Next click "Send To Receiver" on the Golf FXi software screen (Fig. 7), to synchronize the data on the Receiver display with the data currently seen on the PC. The LED light on the USB Transmitter will glow red when you click "Send To Receiver", then blink while the data is being transmitted (if this does not happen, the Transmitter is not getting power via USB — try connecting it to a different USB port). The message on the Receiver changes to "PC FOUND-PLS WAIT 5 MINS" as the data is transmitted it may take several minutes for all the data to be transmitted the first time, but is typically fairly fast. When the Transmitter's light stops flashing, the Receiver unit should now display the same weather forecast data as the Golf FXi software screen. If the temperature or other data does not match, press the UNITS button on the back of the Receiver and then use the + / - buttons on the front of the Receiver to make sure the temperature and other units are set to your preference. If all the data display areas on the Receiver are blank, you may have a "Favorite Location" selected that has not yet been set-up in the Golf FXi software application. If that's the case, either follow the procedure in Step 3 to set the "blank" location on your PC, or press the + or - button on the Receiver to select a Favorite Location which already has already been stored.

RECEIVER/TRANSMITTER BUTTONS AND PARTS

(see table on next page)

Back of Receiver



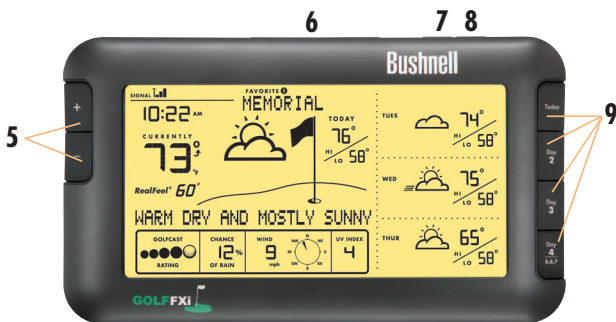
Fig. 7

USB Transmitter



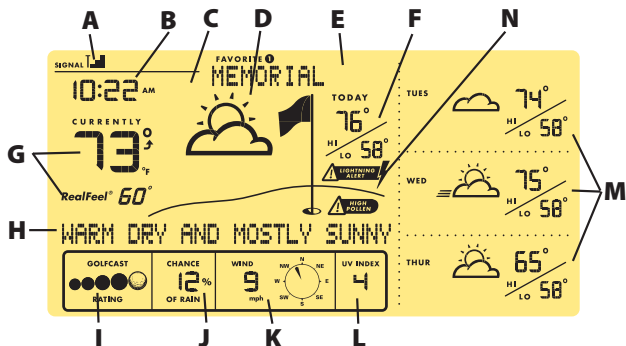
RECEIVER/TRANSMITTER BUTTONS AND PARTS

Front/ Top of Receiver



Button Location	Name	Function
Back of Unit	1) SEARCH	Initiates search for PC — puts receiver on standby to receive data from USB transmitter
Back of Unit	2) UNITS	Press (repeatedly) to select hour format, wind speed and temperature units (use +/- to change setting)
Back of Unit	3) BRIGHTNESS	Press to select backlight brightness level (High, Low or Off)
Top of USB Transmitter	4) TRANSMIT	Equivalent to clicking “Send to Receiver” in Golf FXi software window
Front of Unit	5) + and -	Press to scroll through Favorite Locations and to increment/decrement various settings
Top of Unit	6) SNOOZE/BACKLIGHT	Press to turn backlight on for 10 seconds or snooze alarm (alarm resounds after 9 minutes)
Top of Unit	7) ALARM	Turns alarm on/off
Top of Unit	8) AL SET	Press to set the alarm time (use +/- to change setting)
Front of Unit	9) Today, Day 2, etc.	Displays morning, afternoon and evening forecasts for the selected day. Press & hold “Day 4” to view forecast for Days 5, 6 and 7

RECEIVER DISPLAY GUIDE



A) RF (RADIO FREQUENCY) RECEPTION STATUS

This icon shows the connection status between the Receiver unit and the USB Transmitter. There are three basic status indications:



The Receiver is successfully synchronized to the USB Transmitter and receiving weather data from it periodically.



A flashing icon indicates that the Receiver is searching for the RF signal from the USB Transmitter.



No vertical bars indicates that the RF signal from the USB Transmitter is not being received or is too weak.

B) AUTO-SYNCHRONIZED CLOCK

The clock on the main unit is synchronized to the Internet automatically and is adjusted for optimal accuracy. Press UNITS on the back of the Receiver until you see “Hour Format Setting” and use the + / - buttons to select 12 or 24 Hr time format.

NOTE: If your PC is not connected to the Internet for a long period of time, the clock display may not be accurate. Once you reconnect to the Internet, exit and then relaunch the Golf FXi software, then click “Send to Receiver”.

C) ALARM ON INDICATOR

Icon appears confirming the alarm has been turned on by pressing ALARM.

D) WEATHER FORECAST SYMBOLS (ICONS)

Please see the “Forecast Icons Reference” at the back of this manual for a complete table of the forecast icons for the Golf FXi software screen and the Receiver display, along with the weather conditions they indicate.

E) FAVORITE LOCATION INDICATOR

All the displayed weather data is for the course currently selected on the Receiver. The numbers 1-5 shown here correspond to the location boxes (from left to right) across the top of the screen in the Golf FXi application. “Favorite #1” is your “home” location. Use the + or - buttons on the left side of the Receiver to change the Receiver’s display to show the weather forecast for the other courses (you will see the names of courses 2-5). *NOTE: if you select an “empty” location on the Receiver, which does not have a location set for it in the corresponding box in the software (the box is blank in the Golf FXi application), no data will be displayed on the Receiver.*

F) HI / LO TEMPERATURE FORECAST (Today)

Indicates the forecasted high and low temperatures for the current day.

G) CURRENT TEMPERATURE WITH **RealFeel**[®]

The current temperature at the selected location, and the exclusive AccuWeather.com[®] **RealFeel**[®] Temperature — an index that evaluates everything that affects how warm or cold a person feels, measuring the combined effects of temperature, wind, humidity, sunshine intensity, cloudiness, precipitation and elevation. Press UNITS on the back of the Receiver until you see “Temperature Unit Setting” and use the + / - buttons to select °F or °C (this affects all displayed temperature data).

H) WEATHER MESSAGE

Updated text messages regarding upcoming weather conditions, including any storm alerts

I) GOLFCAST RATING

An exclusive AccuWeather.com index that incorporates the weather factors affecting golfing, including: (1) your comfort and safety, and (2) the condition of the fairways and greens. The index operates on a scale of 1 (poor) to 5 (best), where 5 balls=excellent, 4 balls=very good, 3 balls=good, 2 balls=fair, and 1 ball=poor.

J) CHANCE OF RAIN

The chance of rain is displayed (as a percentage).

K) WIND SPEED AND DIRECTION

The average wind speed & direction forecast. Press UNITS on the back of the Receiver until you see "Wind Unit Setting" and use the + / - buttons to select your preferred wind units (km/h, mph, m/s or knots). The golf flag on the screen will change position based on the wind speed. Flag at full/ high position = wind \geq 10mph; medium position = wind 5-9mph; and low position = wind 0-4mph.

L) MAXIMUM UV INDEX FORECAST

The maximum UV (ultraviolet radiation) index forecast is shown here.

The displayed index levels indicate:

UVI 1 to 2: Maximum UV level is low. There is only a low level of danger to the average person.

UVI 3 to 5: Maximum UV level is moderate. There is a moderate risk of harm from unprotected sun exposure.

UVI 6 to 7: Maximum UV level is high. There is a high risk of harm from unprotected sun exposure.

UVI 8 to 10: Maximum UV level is very high. There is a very high risk of harm from unprotected sun exposure.

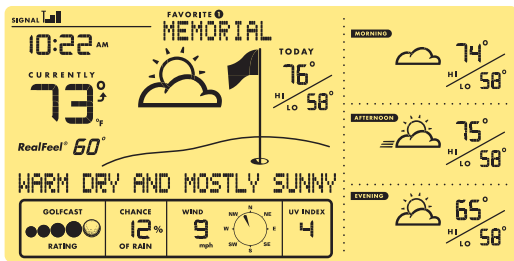
UVI 11 to 15: Maximum UV level is extreme. There is an extreme risk of harm from unprotected sun exposure.

M) FORECAST CONDITIONS AND HIGH/LOW TEMPERATURE FOR ADDITIONAL DAYS OR MORNING/AFTERNOON/EVENING

The right frame of the Receiver's display is capable of displaying different information. Normally it will display the forecast for the next three days (if "Today" is Thursday, it shows the predicted weather for Friday, Saturday and Sunday at the selected Favorite Location). Press the TODAY button to display the Morning, Afternoon and Evening forecast details for the current day (press it again or wait 10 sec. to return to the main display). Press DAY 2 or DAY 3 or Day 4 to see the details for those days. Hold the DAY 4/5,6,7 button to display the forecast for Days 5, 6 and 7 (using the previous example, Sunday would be Day 4, so holding the button would show the forecasts for Monday, Tuesday and Wednesday). *NOTE: The "DETAILS" buttons on the GolfFXi software screen have the same function. Morning/Afternoon/Evening details for Days 5, 6 and 7 are not available (both software and Receiver).*

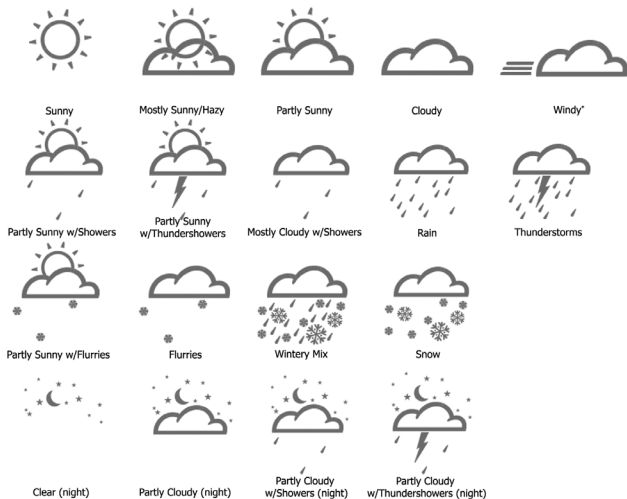
N) Lightning Alert

Alert is displayed when chance of lightning is greater than 50% at anytime throughout the day.



Forecast details for one day in right display frame.

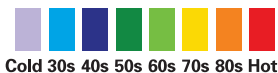
FORECAST ICONS REFERENCE



*Windy icon (strips) will appear when wind speed is greater than 9 mph, and may be combined with any other forecast icon.

BACKLIGHT COLOR REFERENCE:

Temperature Range



TROUBLESHOOTING


1. Be sure that you are using Windows 2000, XP or Vista and your PC is connected to the Internet. You need to have Microsoft .NET Framework 1.1 driver installed in your PC in order to complete the installation of the Golf FXi program. Most PCs purchased after 2005 will already have this if you have an older PC, click "Help and Support" in your Start menu, and then select "Windows Update".

Or, you can download the driver by going to www.microsoft.com and entering "1.1 net framework" in the search box at the top of the page, then clicking the magnifying glass to search the site. The name of the file you need to install is "dotnetfx.exe".

2. Check that the USB Transmitter is properly connected to the USB port of your PC, so you are able to run the Golf FXi software and access the forecast data updates from the Internet. If the Transmitter is disconnected while the Golf FXi program is running, you will see a "USB Disconnected" pop-up window, with options to reconnect the Transmitter and retry sending data to the Receiver, or you may opt to continue to run the Golf FXi program without automatic updates to the Receiver, or Exit the program.



3. If "PC Not Found-Try Searching Again" appears on the Receiver display (or "PC Lost"), your PC was shut down or its power interrupted. Make sure the USB Transmitter is connected, and restart the PC. The Golf FXi application should automatically launch after startup (if not, double click its desktop icon). If you see the "USB Disconnected" message, unplug then reconnect the Transmitter, and click "Retry". Make sure the Golf FXi application has the current weather data ready to send to the Receiver by clicking "Update" (it may take a few minutes to gather all the 7-Day forecast data from the Internet server, especially if you have saved multiple locations. Press the SEARCH button on the back of the Receiver to change its display message to "Searching for PC", then click "Send to Receiver" in the Golf FXi window. The Transmitter LED should light, then blink as the updated data is sent, and the Receiver display should indicate "PC Found..."
4. Be sure all 4 batteries in the Receiver are fresh. Replace the batteries when the low battery indicator appears.

5. If the toolbar icon for the Golf FXi program disappears (in the lower right of your PC screen), the application was terminated and is no longer accessing the forecast from the Internet. Restart the program again. Instead of exiting the program if you don't want its window open, click the "-" on the top right of the application window. To restore the Golf FXi window, double-click its icon in the system tray on the bottom right of your PC screen.
6. In the first few minutes of RF reception from the USB Transmitter, the Receiver may show data on only part of the screen this is normal. The rest of the screen display data will gradually appear in the next 10 minutes or more. If you have waited 1 hour or more without seeing the rest of the weather data, shorten the distance between the Transmitter and Receiver. Also check the Receiver's battery condition. Then repeat the setup procedure in the TRANSMIT DATA FROM PC SOFTWARE TO THE RECEIVER section.
7. If the RF indicator is showing full strength () but one or more of the next 3 days' forecast is missing on the Receiver and Golf FXi program screen, your PC may be offline, or the Internet connection was interrupted. Connect your PC to the Internet again to receive the latest forecast update.
8. If all forecast information appears except the UV Index, your PC may have been offline for more than 1 day. Connect your PC to the Internet again to receive the latest UVI forecast update.
9. If the forecast reading of the Golf FXi software does not match with the Receiver, click "SEND TO RECEIVER" to re-transmit the signal again and wait at least 10 minutes.
10. If a specific course name does not appear in the list for a city, try another one near the golf course ("La Jolla" instead of "San Diego").
11. Heavy Internet traffic may slow down the response time of the weather data server temporary. Try again later if you wish to update the forecast manually by clicking "UPDATE" on the Golf FXi program screen.

*For any other problems or questions,
please contact Bushnell Customer Service at:
(800) 423-3537 • www.bushnell.com*

ONE-YEAR LIMITED WARRANTY

Your Bushnell Golf FXi is warranted to be free of defects in materials and workmanship for one year after the date of purchase. In the event of a defect under this warranty, we will, at our option, repair or replace the product, provided that you return the product with return postage prepaid. This warranty does not cover damages caused by misuse, improper handling, installation, or maintenance provided by someone other than a Bushnell Authorized Service Department.

Any return made under this warranty must be accompanied by the items listed below:

- 1) A check/money order in the amount of \$10.00 to cover the cost of return postage and handling
- 2) Name and address for product return
- 3) An explanation of the defect
- 4) Proof of Date Purchased
- 5) Product should be well packed in a sturdy outside shipping carton, to prevent damage in transit, with return postage prepaid to the address listed below:

IN U.S.A. Send To:

Bushnell Outdoor Products

Attn.: Repairs

8500 Marshall Drive

Lenexa, Kansas 66214

FCC COMPLIANCE INFORMATION

This equipment has been tested and found to comply with the limits for a Class B digital device, pursuant to Part 15 of the FCC Rules. These limits are designed to provide reasonable protections against harmful interference in a residential installation. This equipment generates, uses and can radiate radio frequency energy and, if not installed and used in accordance with these instructions, may cause harmful interference to radio communications. However, there is no guarantee that interference will not occur in a particular installation.

Note: If harmful interference to radio or television reception should occur, determined by turning the product off and on, the user is encouraged to correct interference by trying one or more of the following measures:

- Relocate the receiving antenna.
- Increase the separation between equipment and receiver.
- Connect product to an outlet on a circuit different from receiver.
- Consult an experienced radio/TV technician for help.

Note: The manufacturer is not responsible for any radio or tv interference caused by unauthorized modifications to this equipment. Such modifications could void the user authority to operate the equipment.





For further questions or additional information please contact:

Bushnell Outdoor Products
9200 Cody, Overland Park, Kansas 66214
(800) 423-3537 • www.bushnell.com

©2009 Bushnell Outdoor Products